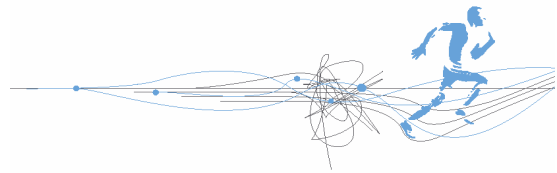




CRM ALLIANCE



CRM Alliance Geocoder

- Just the facts -

CRM Alliance Geocoder is a fast and reliable solution to locate and store valuable geographical information. It can be used as a standalone module or tightly integrated with two other modules of the Scheduler Suite, **CRM Alliance Scheduler** and **CRM Alliance Navigator**.

- ⤴ Automatically matches addresses from any SQL table
- ⤴ Stores geographical coordinates (geocode) into the same table for future reference
- ⤴ Fast, reliable validation and geocoding of address information (with GPS accuracy)
- ⤴ Works with almost any SQL database
- ⤴ Allows easy specification of table and columns
- ⤴ Shows quality and number of matches per row

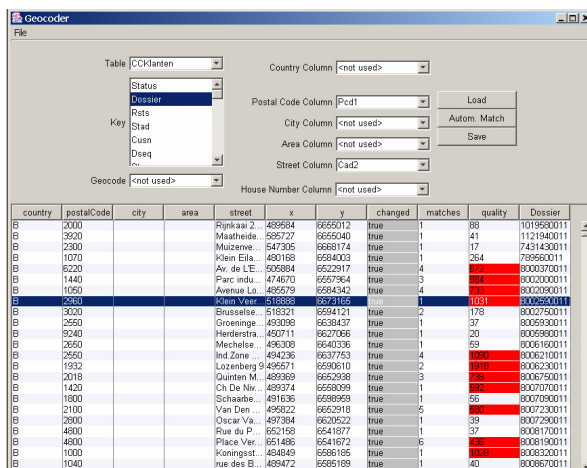


Fig.1 Select table and columns from an address database

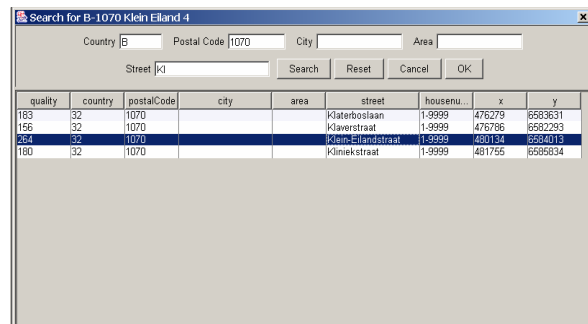


Fig.2 Multiple matches down to street/house number

CRM Alliance BV
 Keizersgracht 62-64
 1015 CS Amsterdam
 The Netherlands

Inquiries:
 +31 20 520 79 66
 Fax +31 20 520 75 10
<http://www.crmalliance.com>

Copyright © CRM Alliance BV 2003, 2008
 All Rights Reserved

This document is provided for informational purposes only, and the information herein is subject to change without notice. Please report any errors herein to CRM Alliance. CRM Alliance does not provide any warranties covering and specifically disclaims any liability in connection with this document.

Company and product names mentioned are used for identification purposes only and may be trademarks of their respective owners.